



## Blue Line Motion Detectors

# Detection is Power



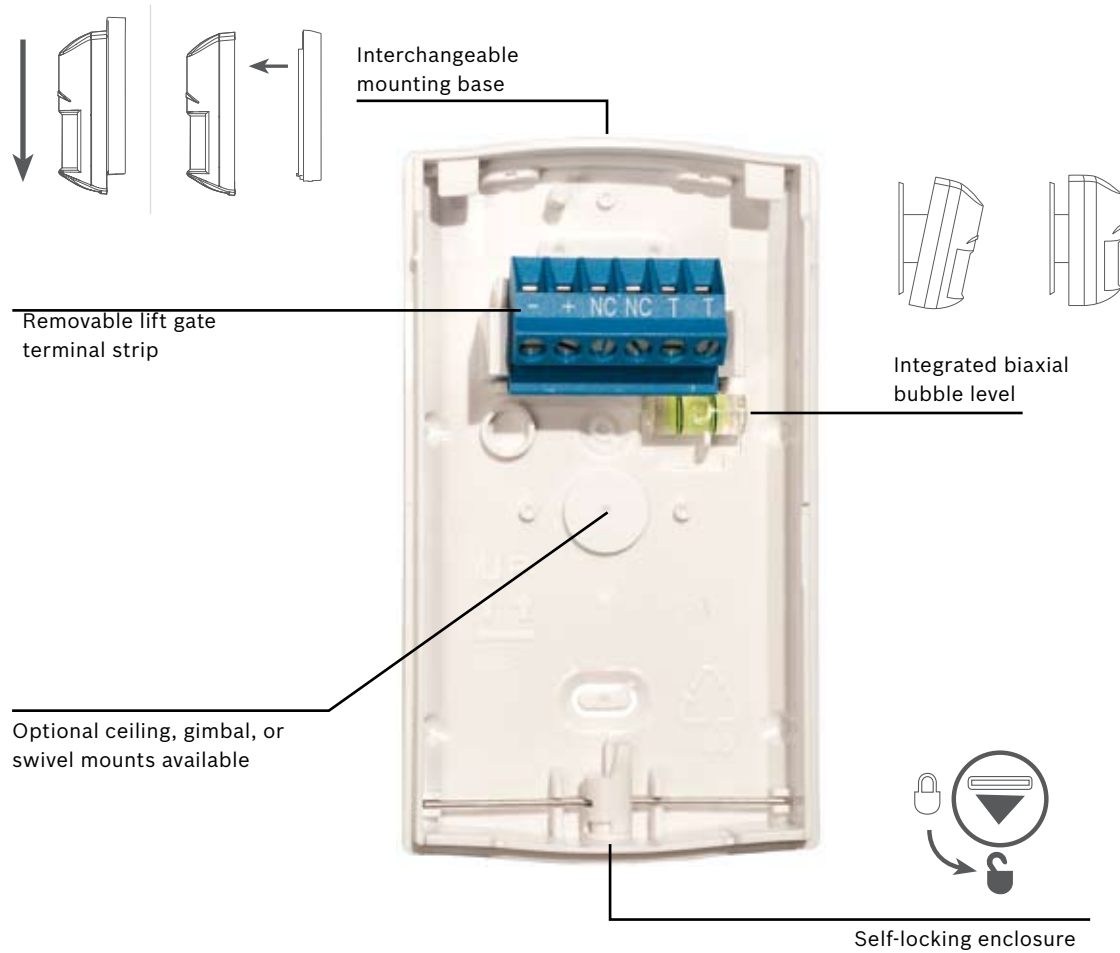
**BOSCH**  
Invented for life



## **Security you can rely on** Blue Line Gen 2 Motion Detectors

Whether you're securing a home, retail store or other commercial business, you need dependability from your systems. With decades of experience and an unwavering dedication to high-quality and high-performing products, Bosch detectors are the best in any class. Millions of residential and commercial users rely on Bosch for superior intrusion detection.

Blue Line Gen 2 Motion Detectors build upon this reputation with a series that delivers easy installation, excellent catch performance and false alarm immunity.



## Easy installation

### Minimize time on the ladder

Get the job done faster with a self-locking, two piece enclosure, integrated biaxial bubble level, and removable terminal strip that reduce mounting time to mere seconds. The commercial grade terminal strip is designed to prevent incorrect wiring and eliminate future service calls. The optics and electronics are

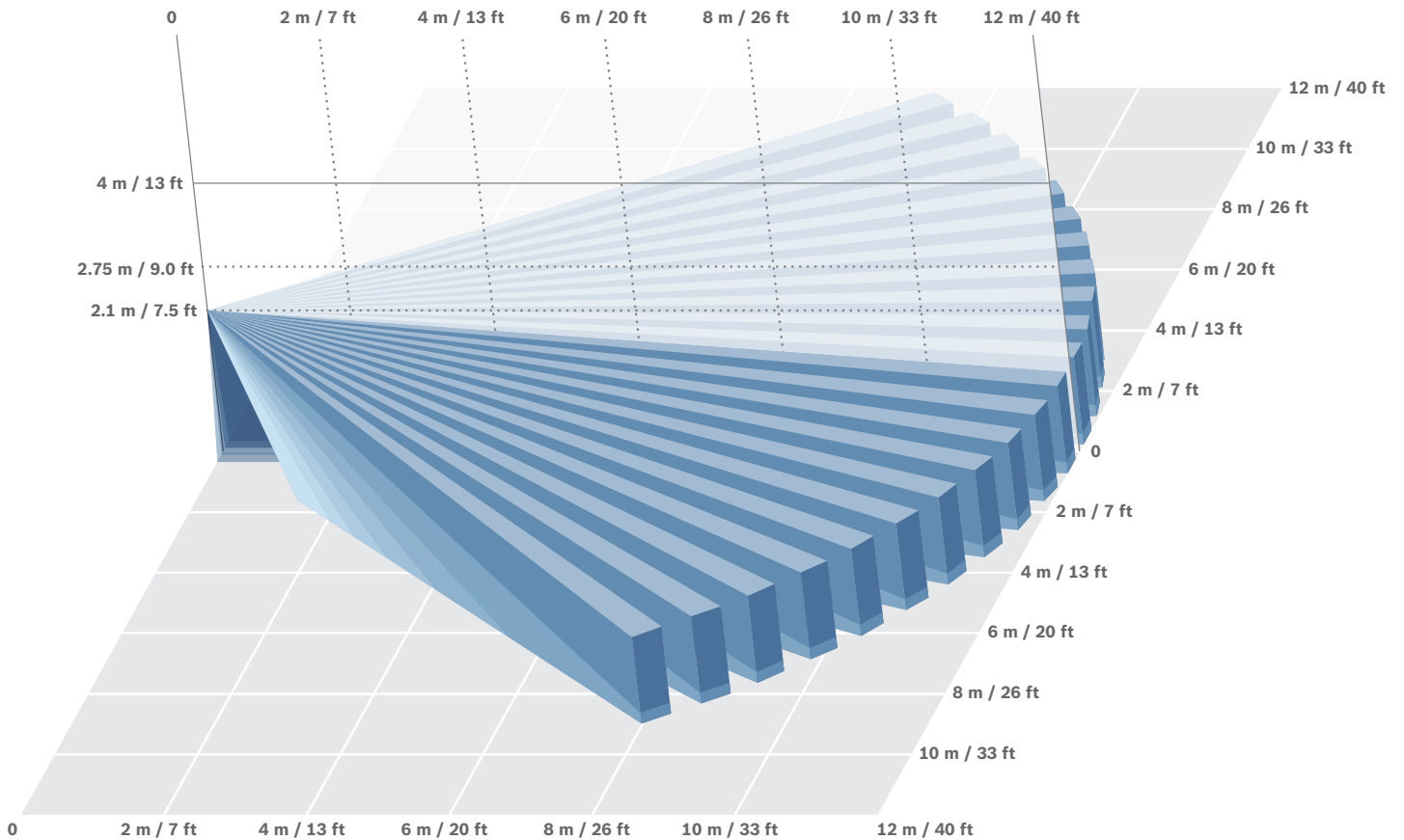
assembled into the front enclosure and sealed with a protective cover to prevent damage during installation. The flexible mounting height allows you to position the detectors at 2.3 to 2.7 meters (seven to nine feet) without adjustment and provides no-gap coverage up to 12 meters (40 feet) away.

# Excellent catch performance

## Wall to wall coverage

Blue Line Gen 2 Motion Detectors deliver a broad 12x12 meter (40x40 feet) wall-to-wall coverage area and offer advanced First Step Processing that intelligently analyzes motion for an almost instant response to human targets without false alarms.

The detectors automatically adjust to their environment by compensating for temperature fluctuations, so you're guaranteed optimal performance regardless of changes in room conditions.



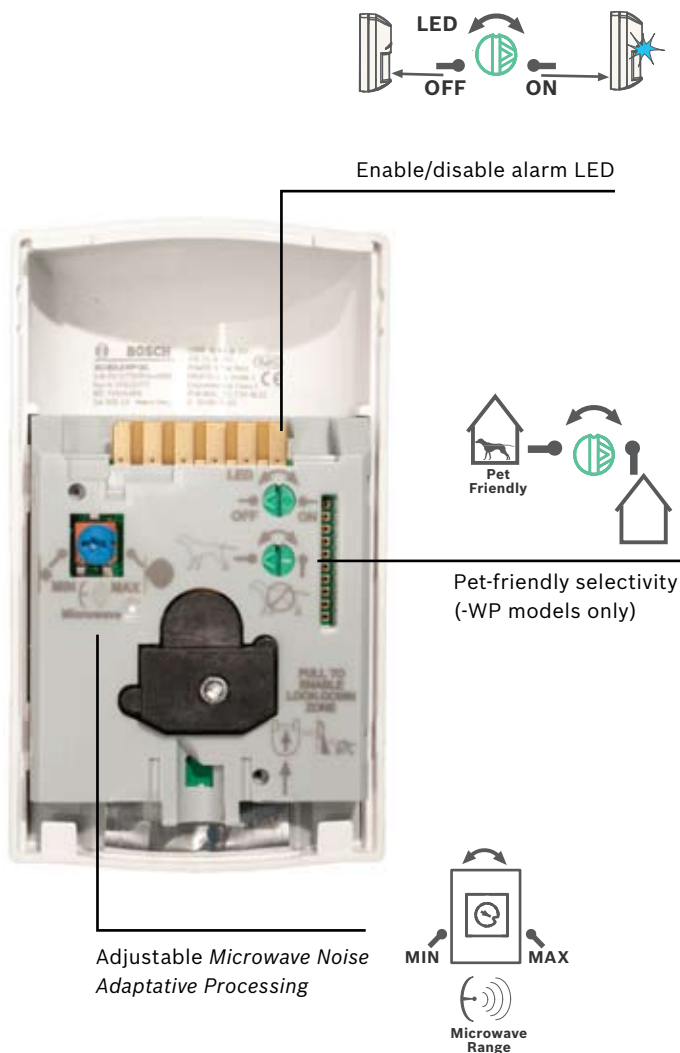
# No more false alarms

## Improved performance and reliability

Blue Line Gen 2 Motion Detectors feature Microwave Noise Adaptive Processing to easily differentiate humans from false alarm sources, such as a ceiling fan or hanging sign. For increased reliability, dual sensors process the PIR and microwave signals independently and must agree there is an alarm before the relay activates. The sealed optical chamber also prevents drafts and insects from affecting the detector, and our pet-friendly models rule out motion from family pets or guard dogs, so you only handle valid alarms.

### Selectable Pet Immunity

Only Bosch's exclusive technology allows the installer to turn pet immunity on or off to suit the application requirements. When activated, pet-friendly models minimize nuisance alarms from cats, guard dogs or other small animals. Use the same model for multiple applications to reduce your inventory – just select Pet or No Pet!



### Pet Friendly Models

PIR and TriTech detectors are available in standard and pet-friendly models.

# Power in numbers

## Blue Line Gen 2 Motion Detector Line

Intelligent intrusion detection is a delicate balance between responding to real security breaches and ignoring costly false alarm triggers. Bosch offers a choice of detector models that set the standard for reliability and rapid detection. Our intrusion detectors suit the requirements of virtually any application – from easy to difficult environments – and stand up to multiple challenges, including strong drafts, moving objects, and the presence of pets.



### Standard PIR Detector ISC-BPR2

This passive infrared (PIR) detector is the perfect balance of performance and economy. It uses a high-density Fresnel lens for sharply-focused images that ensure a superior response to intruders.

### Quad PIR Detector ISC-BPQ2-W1

Get two PIR detectors in one unit. Both PIRs must detect an intruder to signal an alarm. If you have a challenging application and need to eliminate false alarms, using a quad will give you the reliability you need.

### TriTech PIR/Microwave Detector ISC-BDL2

This model combines standard PIR technology with microwave detection technology and adaptive signal processing. It provides the best analysis of disturbances and adjusts to the background for ultimate false alarm immunity.

Comparing the Blue Line			
	Standard PIR Detector	Quad PIR Detector	TriTech PIR/Microwave Detector
First Step Processing	✓	✓	✓
Selectable Pet Immunity	Available on - WP models	-	Available on - WP models
Microwave Noise Adaptative Processing	-	-	✓



## Discreet security

### Reliable performance

Blue Line Gen 2 detectors are compact, neutral in color and they blend right into their environment.

Every Blue Line detector was designed with more than 40 years of intrusion detection experience. Put the power and performance of Blue Line Motion Detectors to work for you today!

Bosch detectors fulfill the requirements of standards all over the world. In the state-of-the-art Bosch laboratory we verify that our detectors pass the most stringent tests of each standard. Bosch also designs its own, even more demanding, tests to ensure the detectors are virtually immune to environmental disturbances. As a result, false alarm protection and catch performance exceed the requirements of any single country, ensuring that worldwide, with Bosch detectors, there is no hiding place for intruders.

As a result, Bosch is recognized throughout the security industry as a global leader in intrusion detection expertise. We've earned this reputation by consistently providing products that meet your needs with a focus on performance, reliability, durability and ease of installation.

**125**  **Bosch**  
Years 1886–2011

In 2011, the Bosch Group is celebrating a double anniversary: the 125th anniversary of the company's establishment, and the company founder's 150th birthday. This is cause for more than mere retrospection – it prompts us to show how the company's past fuels its future. The history of the company has had its ups and downs, but at the same time has always been vibrant. We see this history as one that drives us forward to new – and above all beneficial – achievements.

#### **Bosch Security Systems**

To learn more about our product offering, please visit [www.boschsecurity.com](http://www.boschsecurity.com) or send an e-mail to [emea.securitysystems@bosch.com](mailto:emea.securitysystems@bosch.com)

© Bosch Security Systems, 2011  
Printed in Germany  
Modifications reserved  
XXXX

